



Material Handling Techniques, Inc.

PHONE: 616-890-1475

EMAIL: steve@mhtcando.com

WEBSITE: www.mht.works

DRIVE: DIRECT DRIVEN BY 24VDC POWERED ROLLERS

ROLLER SIZE: 1.9" & 2.5"

ROLLER CENTERS: 2", 3", 4.5", 6", 9"

DRIVE BELT: 1.9 POLY-V = 100#/FT CAP. 2.5 POLY-V = 250#/FT CAP.

ROUND BELT: 1.9 3/16" DIA. URETHANE = 50#/FT CAP.

SPEED: 15-200 FPM (BASED ON LOAD)

WIDTH: 1.9 = 14" - 48" 2.5 = 24" - 72"

BED LENGTHS: VARIABLE UP TO 10FT LONG

ZONES: UP TO 5 ZONES PER 10FT BED

MDR PICKING SYSTEM



MDR CHAIN TRANSFERS



TAPERED ROLLER CURVES



HIGH SPEED WHEEL DIVERT



MDR LIFT AND ROTATE



SEAT BUILD ASSEMBLY WITH LOW PRO LIFTS



MDR POWERED GATE



BELT TRANSFER



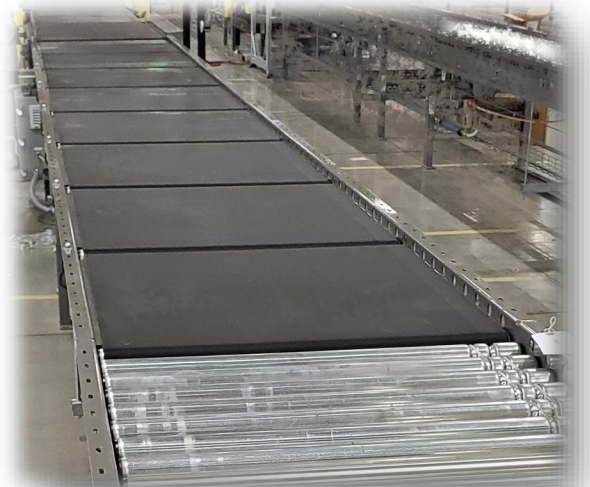
MDR FGI ASRS SYSTEM



H.D. MDR SYSTEM WITH MEZZANINE

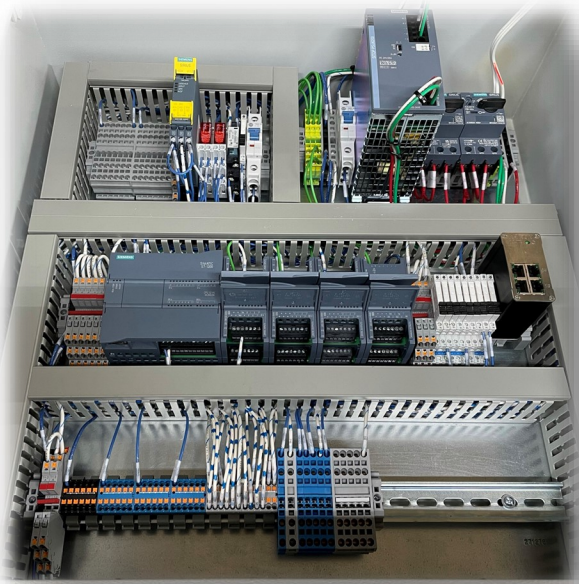


MDR METER BELTS

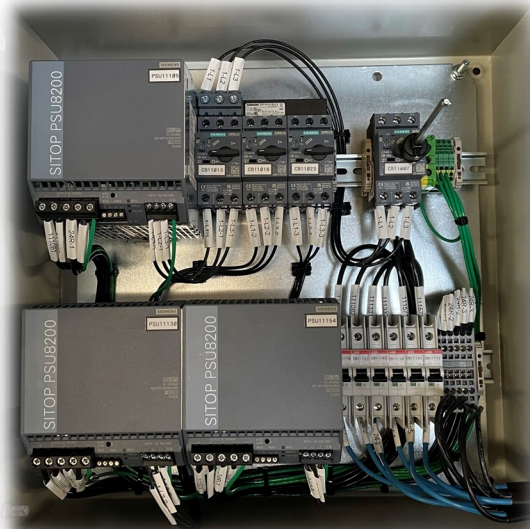


ELECTRICAL CONTROLS

MACHINE CONTROL PANELS



MDR POWER SUPPLY PANELS



DESIGNED AND BUILT WITH THE HIGHEST QUALITY BRANDS



SIEMENS

Ingenuity for life

ELECTRICAL AND CONTROLS SERVICES:

- **PROJECT INITIAL DESIGN**
- **PANEL DESIGN AND BUILD**
- **PLC AND HMI PROGRAMMING**
 - **ALLEN BRADLEY**
 - **SIEMENS**
- **MACHINE VISION**
- **FACILITY TRAINING**

PANEL DESIGN AND BUILD SERVICES



CUSTOM OPERATOR

